

# ***BaByliss®***



**DIAMOND HEATED  
SMOOTHING BRUSH**

**Model 2440BDU**



## **DIAMOND HEATED SMOOTHING BRUSH**

The BaByliss Diamond Heated Smoothing Brush features an unique bristle combination for fast, easy straightness with visible shine. The heated ceramic straightening fins straighten the hair as you brush while the flexible taming bristles and detangling combs give gentle grip, tension and control for total smoothing on all hair types. The super ionic technology gives ultimate frizz-control and boosts shine.

### **FEATURES**

- Unique bristle combination for total smoothness
- Heated straightening fins
- Flexible taming bristles
- Detangling combs
- Diamond infused ceramic finish
- Super ionic frizz-control
- Up to 200°C
- Advanced Ceramics™ for fast heat up
- 3 heat settings: 180°C, 190°C, 200°C
- Auto shut off
- 3m salon swivel cord
- Heat protection mat
- Storage pouch
- Heat protective glove
- 3 year guarantee

### **SUPER IONIC TECHNOLOGY**

The BaByliss Diamond Heated Smoothing Brush features an advanced ionic system which releases super frizz-controlling conditioners to smooth the cuticle, eliminate static and boost shine.

**Please note:** Turning on the appliance will automatically activate the ionic technology. The release of the ions from the ports produces a slight buzzing noise.

## **SAFETY CAUTIONS**

- This appliance should only be used as described within this instruction booklet. Please retain for reference.

## **IMPORTANT CHILD SAFETY**

**WARNING!** Polythene bags over a product or packaging may be dangerous. To avoid danger of suffocation, keep these wrappers away from babies and children. This bag is not a toy.

## **WARNING! THIS APPLIANCE GETS HOT!**

- **ALWAYS** keep out of reach of children (during and after use and whilst cooling).
- This appliance should not be used, cleaned or maintained by children.
- Always take extra care if used on children or near children.
- Do not use on very young children.

## **IMPORTANT SAFETY**

**WARNING!** Do not use this appliance near water contained in basins, bathtubs or other vessels.

- Do not use the appliance in the bathroom.
- Do not immerse the appliance in water or other liquids.
- Always inspect the appliance before use for noticeable signs of damage. Do not use if damaged, or if the appliance has been dropped. In the event of damage, contact the Conair Customer Care Line (refer to 'UK After Sales Service' section for further information).



- Do not use the appliance if the lead is damaged. In the event of damage, discontinue use immediately. If the lead is damaged it must be replaced by the manufacturer. Return the appliance to the Customer Care Centre (refer to 'UK After Sales Service' section for further information). No repair must be attempted by the consumer.
- Do not leave the appliance unattended when switched on or plugged in.
- During use do not place the appliance on any heat sensitive surface, even when using the heat mat provided.
- Take care to avoid the hot surface of the appliance coming into direct contact with the skin, in particular the eyes, ears, face and neck.
- In the event the appliance is left switched on, the appliance will automatically shut off after 72 minutes. If you wish to continue using the appliance after this time, simply slide the switch to the '0' position and then slide the switch to the desired temperature setting to turn the power on.
- This appliance should not be used by adults whose reduced physical, sensory or mental capabilities, or whose lack of experience and knowledge, might cause a hazard, unless they have been correctly instructed to understand the safe use and hazards involved and are adequately supervised.
- After use, do not coil the lead around the appliance as this may cause damage. Instead, coil loosely by the side

of the appliance.

- This appliance complies with the basic requirements of Directives 2014/30/EU (Electromagnetic Compatibility) and 2014/35/EU (Electrical Safety of Domestic Appliances).

### **DIAMOND RADIANCE SHINE SYSTEM**

Diamond Radiance Shine System combines luxuriously smooth diamond infused ceramic with active ionic conditioners to transform the hair.

- ✓ Giving ultimate smoothness
- ✓ Adding brilliant healthy shine
- ✓ Calming frizz
- ✓ Leaving hair beautifully silky soft

**IMPORTANT!** The BaByliss Diamond Heated Smoothing Brush has a high performance Advanced Ceramics™ heater and is designed to reach very high temperatures. If the maximum setting is too hot for your hair type then there are two lower temperature settings available to use.

**CAUTION!** This is a high heat appliance. Care must be taken to avoid the heated surface area coming into direct contact with the skin, in particular the eyes, ears, face, neck, hands and shoulder area.

## HEAT SETTINGS

The heated brush has 3 heat settings. If you have fine, delicate or coloured hair, use the lower heat settings and if you have thick or coarse hair, use the higher heat settings. It is suggested to start on the lowest setting on initial use and increase the temperature until the desired result is achieved.

The LED will blink until the temperature selected has been reached. Once the temperature has been reached the LED will remain solid in colour.

0 = OFF

I = 180°C (Yellow)

II = 190°C (Orange)

III = 200°C (Red)

## INSTRUCTIONS FOR USE

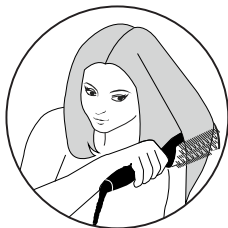
- Ensure hair is fully dried. Use a hairbrush to remove any tangles from the hair and create your parting ready for styling.
- To turn the unit on, slide the switch to the heat setting required. The LED display will illuminate and blink until the selected temperature has been reached. Once the temperature has been reached the LED will remain solid in colour.
- Place the heated brush underneath the hair section close to the roots with the bristles pointing upwards. Use your other hand to pull the hair section taut against the heated plate until the bristles penetrate through the hair.



- Glide the heated brush steadily down towards the ends of the hair. Continue to use the other hand to keep the hair taut, sliding it down the section ahead of the brush. **Please note.** The hand sliding down the hair section must not be too close to the brush to avoid any heat contact. For additional protection the heat protection glove can be worn on the hand holding the hair section.



- As the heated brush nears the end of the hair, release the hair section with the other hand and turn the heated brush under to give shape at the ends of the hair.



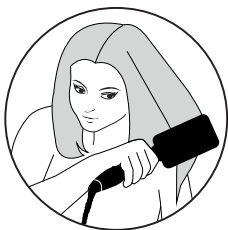
- To finish your style and smooth the top of the hair, place the heated brush on the top of the hair section. Use the other hand to pull the section upwards and taut against the heated plate until the bristles penetrate through the hair. Take care to avoid pressing the heated plate against the scalp.



- Glide the heated brush down towards the ends of the hair, using the other hand as before to keep the section taut.



- As the heated brush nears the end of the hair, release the hair section from the other hand and brush through to the ends.



- Repeat as necessary, until desired result is achieved.
- After use, slide the switch to the '0' position to turn the heated brush off.
- Allow the heated brush to cool down completely, place the heated brush into the pouch provided and store away.

**Please note:** Turning on the appliance will automatically activate the ionic technology. The release of the ions from the ports produces a slight buzzing noise.

### **Useful tips**

- For best results on thick or curly hair, insert the brush head close to the root, underneath the hair section and glide slowly until you reach the ends of the hair. Then place the heated brush close to the root, on top of the hair section and glide down slowly until you reach the ends of the hair. Repeat as necessary.
- For a style with shape on the ends, insert the heated brush underneath the hair section, close to the root. As you glide down the hair rotate the brush around slightly to curl the ends under.

### **HEAT PROTECTION MAT**

This appliance comes with a heat mat for use during and after styling. During use do not place the appliance on any heat sensitive surface, even when using the heat mat provided. After use, switch off and unplug the appliance. Continue to keep it out of the reach of children as the appliance will remain hot for several minutes.



## **STORAGE POUCH**

The inside lining of the pouch is heat resistant, allowing the heated brush to be placed inside the pouch whilst cooling, allow to fully cool down before storing away. Do not place on any heat sensitive surface while the appliance is still hot.

**IMPORTANT!** Do not place the appliance onto the outside of the pouch when it is still hot, as the outside material is not heat resistant. Use the heat protection mat to protect work surfaces.

## **HEAT PROTECTIVE GLOVE**

A heat protective glove has been supplied to help protect the hand from temporary contact with the hot surface of the appliance.

**Please note:** The heat protective glove is only designed to give initial contact protection. Discomfort will be caused with prolonged contact with the hot surface.

## **AUTO SHUT OFF**

This appliance has an automatic shut off feature for added safety. If the appliance is switched on for more than 72 minutes continuously, then it will automatically switch off. If you wish to continue using the appliance after this time, simply slide the switch to the off position and then slide the switch to the desired temperature setting to turn the power on.

## **CLEANING AND MAINTENANCE**

To keep your heated brush in the best possible condition, it is important to clean it after use. When the heated brush is completely cool remove any loose hairs from the bristles after every use and make sure there is no product build up on the heated plate, straightening fins, bristles and combs. This will ensure optimum results with every use. To clean the brush use a damp cloth to wipe away any styling product, only do this when the heated brush is completely cool and allow to fully dry before use.

**IMPORTANT!** Do not immerse the appliance in water or other liquids. To prevent cord damage never wrap the cord around the heated brush, always store the cord loosely next to it.

## **UK GUARANTEE**

This BaByliss appliance is guaranteed for consumer use for 3 years.

This guarantee covers defects under normal use from date of purchase and ceases to be valid in the event of alteration or repairs by unauthorised persons. If the appliance does not perform satisfactorily due to defects in materials or manufacture, it will be repaired or replaced through Conair UK After Sales Service. The Conair Group Ltd reserves the right to amend terms and specifications without prior notice.

This guarantee in no way affects your statutory rights.

## **UK AFTER SALES SERVICE**

For further advice on using the appliance or should you need to return your product, please contact the Conair Customer Care Line on 0370 5 133191 (09:00 to 17:00 Monday to Friday) or e-mail your enquiry to [ukinfo@conair.com](mailto:ukinfo@conair.com).


The return address is:

Customer Care Centre  
Conair Logistics  
Unit 4, Revolution Park  
Buckshaw Avenue  
Buckshaw Village  
Chorley  
PR7 7DW

Please enclose your returns number, name and address details, together with a copy of proof of purchase and details of the fault.

## SAFE DISPOSAL



The  symbol on the product or on its packaging indicates that this product may not be treated as household waste. Instead it should be handed to an appropriate collection point for the recycling of Electrical and Electronic equipment. By ensuring this product is disposed of correctly, you will help prevent potential negative consequences for the environment and human health, which could otherwise be caused by inappropriate waste handling of this product. For more detailed information about the recycling of this product, please contact your local council office or your household waste disposal service.


## UK WIRING INSTRUCTIONS

The wires in the mains lead are coloured in accordance with the following code:

BLUE = NEUTRAL

BROWN = LIVE

As the colours of the wire in the mains lead of this appliance may not correspond with the colour marking identifying the terminals on your plug, proceed as follows:

- The wire which is coloured BLUE must be connected to the terminal which is marked with the letter N.
- The wire which is coloured BROWN must be connected to the terminal which is marked with the letter L.
- Neither the BLUE nor BROWN wires should be connected to the terminal which is marked with the letter E or the  symbol.

This appliance is supplied fitted with a BS1363 mains plug and a BS1362 5A fuse. If this plug is removed from the appliance please ensure it is disposed of safely as a disconnected plug is dangerous if reconnected to the mains. If any other type of plug is used, a 5A fuse must be fitted.

