

BaByliss[®]

SUPER-X METAL SERIES X-BLADE OT992U/OT996U


SAFETY CAUTIONS

- This appliance should only be used as described within this instruction book. Please retain for reference.

IMPORTANT CHILD SAFETY


- **ALWAYS** keep out of the reach of children (during and after use).
- This appliance should not be used, cleaned or maintained by children.
- Always take extra care if used on children or near children.
- Do not use on very young children.

IMPORTANT SAFETY

- This appliance can be used in the bath or shower. 
- WARNING:** Keep the power cord and appliance charging stand dry and away from sources of water so that they do not fall into the water. For appliances with a removable power supply adaptor, remove the power cord before using or cleaning.
- Do not leave the appliance plugged in for more than 24 hours.
 - Unplug immediately if any problems occur during use.
 - **IMPORTANT!** For best performance rinse under warm

running water before and after use to clean and lubricate the blade.

- **UK Only:** Do not charge this appliance in the bathroom.
- **Outside the UK:** If using the appliance in a bathroom, unplug after use as the proximity of water can be dangerous even if the appliance is switched off. For additional protection the installation of a residual current device (RCD) with a rated residual operating current not exceeding 30mA is advisable in the electrical circuit supplying the bathroom. Ask your installer for advice.
- Always inspect the appliance before use for noticeable signs of damage. Do not use if damaged or if the appliance has been dropped. In the event of damage contact the Conair Customer Care Line (refer to 'UK After Sales Service' section for further information).
- Do not use the appliance if the USB power supply lead is damaged. In the event of damage, discontinue use immediately. If the lead is damaged, it must be replaced by the manufacturer. Return the appliance to the Customer Care Centre (refer to 'UK After Sales Service' section for further information). No repair must be attempted by the consumer.
- Only use the attachments supplied with this appliance.
- **USB ADAPTOR INFORMATION :** A USB power supply adaptor is not supplied for this product. If you require one for charging, you can visit www.babyliss.com and enter product code OT992U or OT996U under the 'Spares & Accessories' section of the website. If you require assistance in locating the adaptor, please contact the Conair Customer Care Line for further information.

- **WARNING!** To charge this product, only use a certified suitable USB power supply adaptor (BaByliss CA100 - part code 62869) with an output rating of 5V, 1A, 5W. Using a non-certified or incorrect USB power supply adaptor may cause hazards or serious injuries.
- Do not expose the appliance or battery to excessive temperatures.
- Recommended ambient temperature for charging is 5°C to 40°C.
- Charging outside of this temperature range may cause the battery to leak, generate heat, or result in serious damage. It may also cause the battery's performance and life to deteriorate.
- Be aware of the risk of terminals of the battery-operated appliance or battery being short circuited by metal objects.
- The USB power supply adaptor is available via www.babyliss.com. If you need support in finding the correct USB power supply adaptor, contact the Conair Customer Care Line for further information.
- Keep the USB cable, USB power supply adaptor and accessories dry.
- **WARNING!** Using a non-certified USB power supply adaptor may cause hazards or serious injuries.
- This symbol  indicates there is a detachable USB power supply adaptor for means of charging (CA100).
- Do not leave the appliance unattended when switched on.
- Do not place the appliance on any surface whilst in operation.

- Special care is required when using the appliance close to the ears, eyes and face.
- This appliance should not be used by adults whose reduced physical, sensory or mental capabilities, or whose lack of experience and knowledge, might cause a hazard, unless they have been correctly instructed to understand the safe use and hazards involved and are adequately supervised.
- This product contains a Lithium Ion rechargeable battery that is not to be removed from the appliance for charging. The batteries in this appliance are non-replaceable. Batteries must be disposed of safely at the end of life. Please take to a recycling centre for safe disposal.
- The supply terminals are not to be short circuited.
- For indoor, household, domestic use only.
- This product complies fully with all appropriate EU and UK Legislation and the standards relevant to this type and class of appliance. We are an ISO9001:2015 certified company that continually evaluates our Quality Management System performance. If you have any queries regarding product safety and compliance, please contact the Conair Customer Care Line (refer to 'UK After Sales Service' section).

Charging the Appliance

- Before using for the first time, the appliance should be fully charged continuously for 3 hours. This initial super-charge ensures optimum power performance to ensure smooth fast trimming every time. Maximum battery capacity will only be reached after 3 charging and discharging cycles.
- Attach the magnetic end of the charging cable to the charging stand,

if supplied, or directly to the base of the unit.

- Plug the USB-C cable into a suitable adaptor and switch on at the wall. A white LED will blink whilst the unit is charging and remain on once fully charged.

Note: Always ensure the trimmer is off when charging.

- A full 3 hours charge will supply enough power for 45 minutes of use.
- Subsequent charges should be for 3 hours.
- When the trimmer is in use, and is running low on charge, the LED indicator light will flash, warning there is approximately 5 minutes of battery use remaining.
- If the charging light starts to flash rapidly (more than 4 flashes per second) then the appliance is faulty. If this happens then please stop charging and remove the adapter from the mains and contact the Conair Customer Care Line.
- At the end of the charging process, this appliance enters stand-by mode (power consumption <0.5W).

WARNING! To charge the product, only use a certified suitable USB power supply adaptor (BaByliss CA100) with an output rating of 5V, 1A, 5W. Using a non-certified or incorrect USB power supply adaptor may cause hazards or serious injuries.

The USB power supply adaptor is available at www.babyliss.com.

Preserving the Batteries

In order to maintain the optimum capacity of the rechargeable batteries, the trimmer should be fully discharged and then recharged for 3 hours every 6 months.

USB Adaptor

A USB power supply adaptor is not supplied for this product. If you require one for charging, you can visit www.babyliss.com and enter part code 62869, under the 'Spares & Accessories' section of the website. If you need support in finding the correct USB power supply adaptor, contact the Conair Customer Care Line for further information.

WARNING! Using a non-certified USB power supply adaptor may cause hazards or serious injuries.

Turning on the Appliance

- To turn the trimmer on press the power button on the appliance. The LED light will illuminate and is ready for use.
- **IMPORTANT!** For best performance rinse under warm running water before use to lubricate the blade.
- To turn off the trimmer, press the button on the appliance. The LED light will go off.

Comb Guides

- This appliance is supplied with 4 comb guides for use with the trimmer.
- Trim to a precise length with one of the 4 stubble and short beard comb guides; 1, 2, 3 or 5mm.

Note: The trimmer can be used without any comb guides and will cut to 0.2mm.

Attaching and Removing the Comb Guides

- Position the comb guide over the blade at one side and gently push down until it snaps into position at the other side. (Fig. 1)
- To remove the comb guide gently hold one end. The other end, position your finger underneath the comb guide and gently push the comb guide away from the blade. (Fig. 2)

Fig. 1

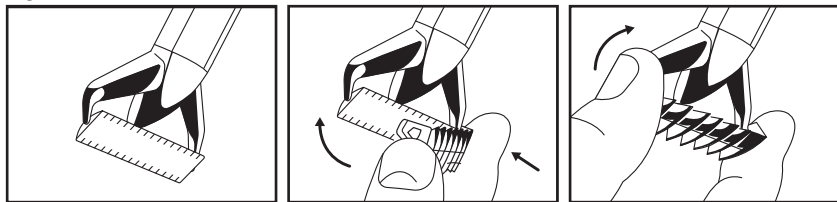
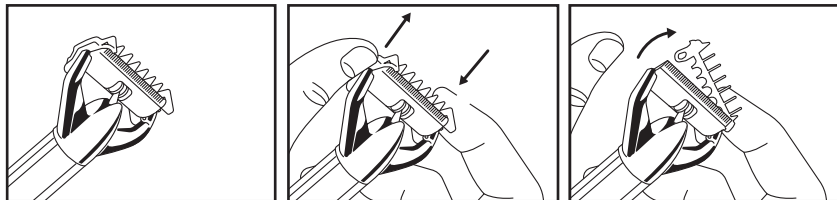


Fig. 2



Note: See video at www.babyliss.com for video tutorial on how to attach and remove comb guide.

Trimming

- Switch the trimmer on.
- **IMPORTANT** for best performance rinse under warm water before use and lubricate the blade.
- Hold the trimmer with the blade flat against the skin.
- Move the trimmer through the hair. The blade follows the contours of your face so you can shave comfortably in any direction.
- The trimmer will work most efficiently when cutting through hair at its own speed.
- Never switch the appliance off whilst in the hair.

Edging and Detailing

- To tidy up edges around your neckline and sideburns, detach the comb guide.
- Hold the appliance, so the front of the trimmer is facing towards your head.
- Hold the trimmer blades straight on your sideburns or neckline and move the trimmer blades downwards. This will give you a clean, smooth finish.

To Fit a Replacement Blade

- Check that the trimmer is turned off.
- From the locked position (Fig. 3), to remove a trimming head from the handle, turn the head anti-clockwise until the '▲' on the handle aligns with the '▼' on the head, then lift the head gently away from the handle. (Fig. 4).
- To reassemble the head onto the handle, align the '▼' on the head with the '▲' on the handle (Fig. 5) and then turn clockwise.
- When the '▼' on the head aligns with the '□' on the handle, the head is locked into position for use (Fig. 6).

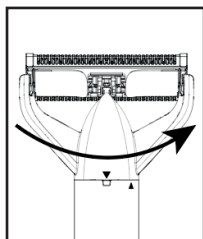


Fig. 3

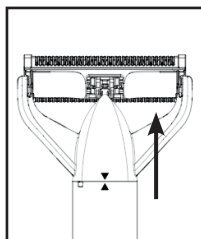


Fig. 4

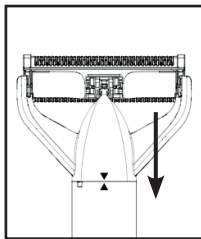


Fig. 5

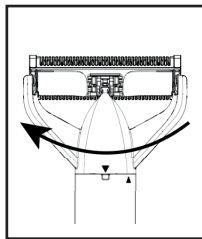





Fig. 6

Waterproof IPX7

The trimmer and comb guides are 100% waterproof and can be used in the shower and bath. Always ensure to clean and allow the trimmer to dry after each use and before storing away. See 'Cleaning & Maintenance' section.

Travel Lock


- To prevent the appliance from switching on unintentionally, you can lock the appliance using the 'ON/OFF button marked with the .
- Press and hold down the 'ON/OFF button marked with the  for 2 seconds. The LED light will flash for 3 seconds to confirm the product is locked. If you want to unlock your appliance, press and hold down the 'ON/OFF button marked with the  for 2 seconds. The appliance will then unlock and start to work normally.
- When charging the unit, the travel lock is automatically deactivated.

Cleaning and Maintenance

- **IMPORTANT!** The blade is washable for easy cleaning.
- After use, remove any comb guide, and rinse the blade under warm running water to remove any debris. Dry thoroughly before storing away.
- Do not disassemble the blades.
- Blades last up to 6 months.
- Replaceable heads available at www.babyliss.com

SAFE DISPOSAL



The  symbol on the product or on its packaging indicates that this product may not be treated as household waste. Instead it should be handed over to an appropriate collection point for the recycling of electrical and electronic equipment. By ensuring this product is disposed of correctly, you will help prevent potential negative consequences for the environment and human health, which could otherwise be caused by inappropriate waste handling of this product. For more detailed information about the recycling of this product, please contact your local council office or your household waste disposal service.

UK GUARANTEE

This BaByliss appliance is guaranteed for consumer use for 3 years and is only valid within the United Kingdom.

This guarantee covers consumer use only **i.e.** defects occurring under normal use within the home from date of purchase or date of delivery, whichever is later.

If the product develops a fault due to defects in materials or manufacture **within 12 months** from the date of purchase, to avoid delays and unnecessary inconvenience, where possible please return the product to the point of purchase for an exchange.

If the product develops a fault due to defects in materials or manufacture **after 12 months** from the date of purchase, and within the guarantee period, Conair UK After Sales Service will repair or replace the product.

Exclusions

This guarantee will no longer be valid meaning that The Conair Group Ltd will not be liable to repair or replace your product where:

- 1.) The appliance has been used on a voltage supply other than that which is marked on the product, or advised within this instruction booklet
- 2.) The appliance has been purchased from an unauthorised stockist*
- 3.) The appliance is used for professional / non domestic usage
- 4.) Repairs or alterations have been attempted by unauthorised persons
- 5.) The failure of the appliance is a direct result of misuse
- 6.) The failure is a result of not following the instructions for use

This guarantee does not cover any cosmetic damage due to misuse of the product nor any damage to persons or property that occurs because of product misuse.

This guarantee does not include consumable items such as blades, foils and cutter heads which are available as spares from our BaByliss PRO website; <https://babyliss-pro.conairspares4u.co.uk>

**unauthorised stockists include, but are not limited to online auction sites, private sellers and those selling second hand goods, refurbished products etc*

Please contact the Conair Customer Care Line on 03705 133 191 (09:00 to 17:00 Monday to Friday) or e-mail ukinfo@conair.com for further information on authorised stockists.

It is important to retain your proof of purchase. We recommend attaching your receipt to this page.

Even where a refund may be applicable, no refund will be provided without a valid receipt or proof of purchase, we will only be able to offer a repair or replacement service. Please note this does not apply if the product was purchased directly from The Conair Group Ltd.

This guarantee is an additional benefit and does not affect your statutory rights as a consumer.

If you have any queries regarding this guarantee please contact the Conair Customer Care Line on 03705 133 191 (09:00 to 17:00 Monday to Friday) or e-mail ukinfo@conair.com

UK AFTER SALES SERVICE

For further advice on using the appliance, contact the Conair Customer Care Line on 03705 133191 (09:00 to 17:00 Monday to Friday) or email your enquiry to ukinfo@conair.com.

If you should need to return your appliance to us please send it to the following address:

Customer Care Centre
Conair Logistics
Unit 4
Revolution Park
Buckshaw Avenue
Buckshaw Village
Chorley
PR7 7DW

Please enclose your name and address, together with a copy of proof of purchase and details of the fault.

Please note this Instruction Booklet is not the guarantee.